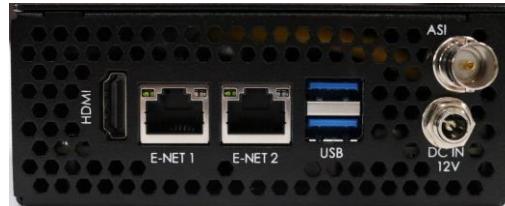




# OX-1

## Secure Reliable IP Streaming

ASI to TSoIP/TSoIP to ASI, SMPTE 2022, SRT, Zixi, RIST



Made in the USA

### PRODUCT DESCRIPTION

The OX-1 is a compact, secure reliable IP streaming appliance supporting any combination of SRT, Zixi, RIST and SMPTE 2022 streaming formats. OX-1 is ideal for streaming media over busy LANs, the unpredictable public Internet, and microwave links with an IP interface.

When configured as a sender, the OX-1 accepts a MPEG transport stream over IP, encrypts the content, and encapsulates the secured packets in a transport stream wrapper based upon the selected streaming protocol. When configured as a receiver, the process is reversed.

An optional ASI hardware interface is available thus adding the capability to convert an ASI transport stream to an IP transport stream prior to processing the IP stream for reliable, low latency delivery over unpredictable Internet and LAN connections.

When configured as a receiver with the optional ASI interface, the incoming IP stream may be converted to ASI or left in the TSoIP or converted to any other supported IP streaming format.

### FEATURES LIST

- SMPTE 2022, SRT, RIST & Zixi
- ATSC 3.0 STLTP over RST/SRT
- AES 128/192/256-bit encryption
- SNMP remote monitoring
- Configurable as source/sender or destination/receiver
- 4 x Outputs for each input
- Licensable for up to 8 inputs
- 2 Configurable Ethernet Ports
- ASI I/O Interface (optional)
- External 12 VDC Power Supply

**VISION + INNOVATION**

March 2024. Specifications subject to change without notice.



# OX-1

## Secure Reliable IP Streaming

ASI to TSoIP/TSoIP to ASI, SMPTE 2022, SRT, Zixi, RIST

### Specifications

|                                     |   |
|-------------------------------------|---|
| <b>Front panel LED indicators</b>   | Power, mode, status, and input  |
| <b>ASI Interface (option)</b>       |   |
| <b>Connector</b>                    | BNC (F) 75 Ohm  |
| <b>Data rate input</b>              | 270 MHz +/-10ppm  |
| <b>Data rate output</b>             | 270 MHz +/-3ppm   |
| <b>Logic levels</b>                 | 800 mV +/-10%   |
| <b>ASI Burst</b>                    | 213 Mbps  |
| <b>Ethernet Interface Data Port</b> |   |
| <b>Connector</b>                    | Ethernet -IEEE 802.2ab RJ-45  |
| <b>Data rate</b>                    | 100/1000 Mbps auto sensing  |
| <b>IP Protocols</b>                 | Unicast, Multicast, UDP, RTP, SMPTE 2022-1/-2, SRT, RIST, Zixi  |
| <b>SMPTE-2022 FEC</b>               | L 1-20, D 4 -20, LxD 4 - 100  |
| <b>IP Streaming Rate</b>            | Up to 150 Mbps  |
| <b>MPEG-TS protocol conversion</b>  | ASI to TSoIP / TSoIP to ASI (ASI interface option required)   |
| <b>Encryption</b>                   | AES 128-bit & 256-bit (RIST)<br>AES 128-bit, 192-bit & 256-bit (SRT)  |
| <b>Adaptability</b>                 | Configurable as a Source/Sender or Destination/Receiver   |
| <b>Inputs</b>                       | Up to 8 licensable inputs (1 of which may be ASI)*  |
| <b>Outputs</b>                      | Up to 4 output streams per input* (1 of which may be ASI if not used as an input) *Total number of cumulative outputs may be limited by IP streaming protocols, link condition, streaming protocol selected, and other variables. |
| <b>Control &amp; Monitoring</b>     |   |
| <b>Connector</b>                    | Ethernet -IEEE 802.2ab RJ-45  |
| <b>Data rate</b>                    | 100/1000 Mbps auto sensing  |
| <b>Security</b>                     | Account and password  |
| <b>Presentation</b>                 | Integrated web server   |
| <b>SNMP</b>                         | SNMP remote monitoring  |
| <b>Secondary Control Interfaces</b> |   |
| <b>Video</b>                        | HDMI  |
| <b>Keyboard/Mouse</b>               | USB   |
| <b>Physical</b>                     |   |
| <b>Dimensions</b>                   | 1.75”H x 4.63” W x 9.63” D  |
| <b>Power</b>                        | 12 VDC locking connector  |
| <b>Cooling</b>                      | Forced air front to rear flow   |
| <b>Warranty</b>                     | 1-yr. standard, Extended Warranty option is available   |

**VISION + INNOVATION**

March 2024. Specifications subject to change without notice.